



**MICHAEL
EVERETT**

ASHURST ROAD

TADWORTH

www.michael-everett.co.uk

31 ASHURST ROAD

TADWORTH KT20 5ET



2 RECEPTION ROOMS & CONSERVATORY



KITCHEN DINER



4 BEDROOMS



2 BATHROOMS & CLOAKROOM

APPROX. 1419.77 FT² | 131.9 M²

An attractive and spacious semi detached house featuring extended ground floor accommodation, a loft conversion and a large west facing rear garden.

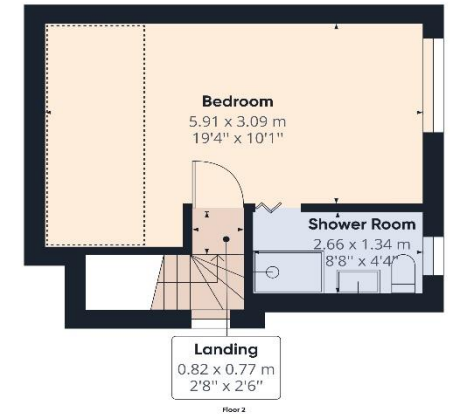
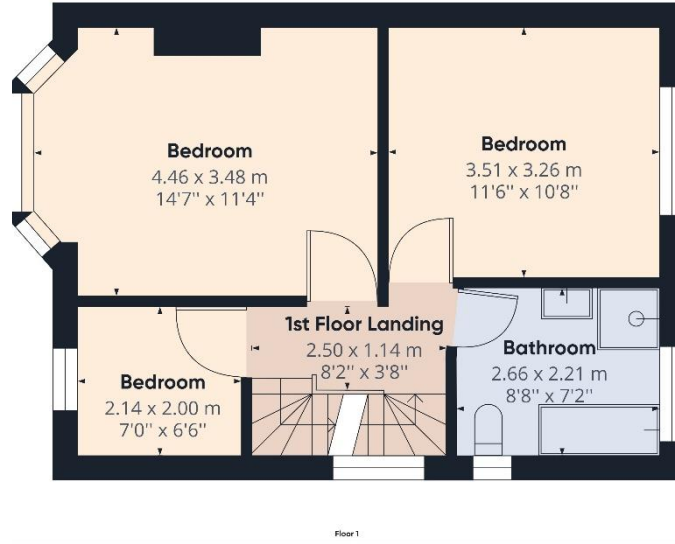
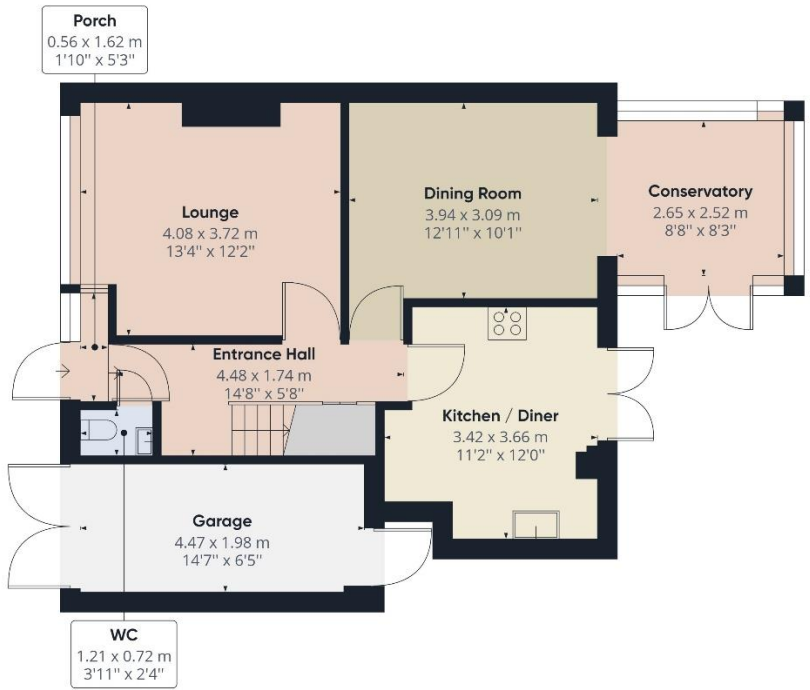
Well-presented throughout, the house features two reception rooms, a modern double glazed conservatory, kitchen diner, ground floor cloakroom, three first floor bedrooms with a large bathroom and 2nd floor bedroom suite with shower room.

Outside, there is parking to the front for two cars, a narrow garage suitable for motorcycles and a lovely rear garden with a patio, lawn, and two sheds, one of which has been converted into a home office.

The house is located close to the village centre shops and station, Tadworth Primary School and Sports centre and the open spaces of both Walton Heath and Epsom Downs.

GUIDE PRICE: **£700,000**







WALTON ON THE HILL 61 Walton Street, Walton-on-the-Hill, Surrey KT20 7RZ
01737 814877

IMPORTANT We would inform prospective purchasers that these sales particulars have been prepared as a general guide only. A detailed survey has not been carried out, nor the services, appliances and fittings tested. Room sizes should not be relied upon for furnishing purposes and are approximate. If floor plans are included, they are for guidance only and illustration purposes only and may not be to scale. If there are any important matters likely to affect your decision to buy, please contact us before viewing the property.



michael-everett.co.uk